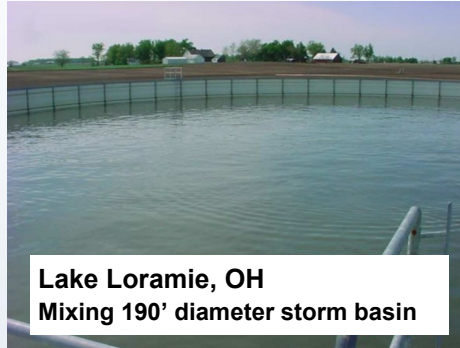




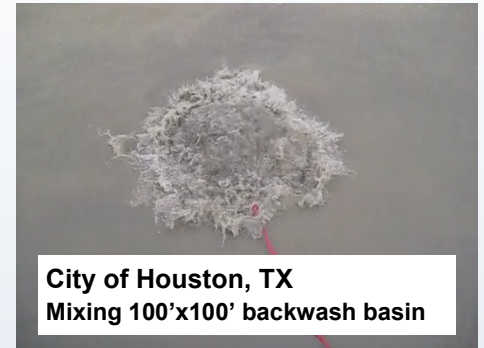
LOW COST, LOW ENERGY, EFFECTIVE AND EFFICIENT MIXING



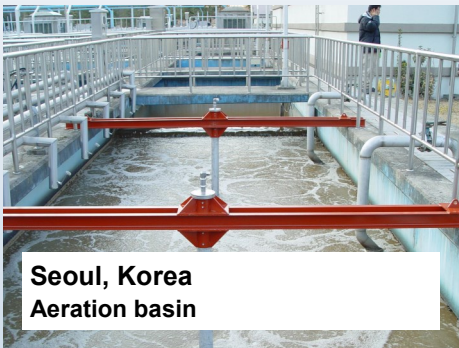
Tiffin, OH
Mixing four BNR basins



Lake Loramie, OH
Mixing 190' diameter storm basin



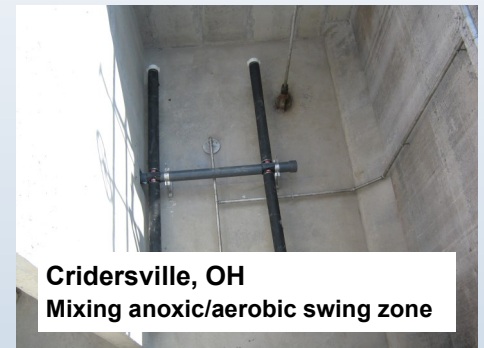
City of Houston, TX
Mixing 100'x100' backwash basin



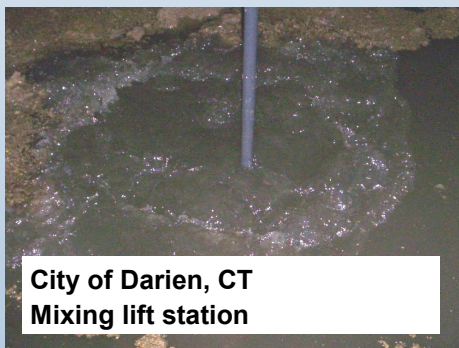
Seoul, Korea
Aeration basin



SWPA
Mixing potable water tanks



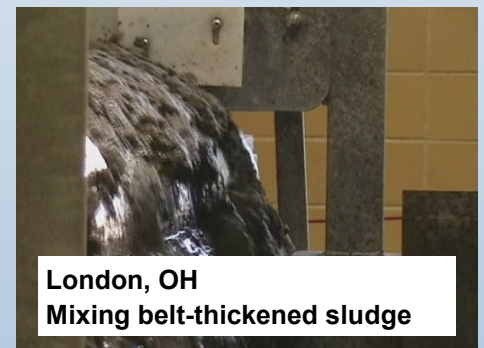
Cridersville, OH
Mixing anoxic/aerobic swing zone



City of Darien, CT
Mixing lift station



ASPC—Tucson, AZ
Mixing lift station



London, OH
Mixing belt-thickened sludge

The Pulsed Hydraulics (PHi) mixing system is sweeping the municipal water and wastewater industry due to its effectiveness of mixing, economy of operation, and ease of maintenance.

PHi mixers scale from the smallest tanks, such as lift stations and chemical mixing tanks, to the largest, including anoxic and aerobic wastewater treatment basins, and enormous potable water storage tanks.

Benefits to migration to the PHi mixing system include:

- The most energy efficient mixing system in the field—usually 50% or more energy savings by comparison
- Low system cost
- Adjustable mixing power which allows using just enough energy to complete the task
- Mixes all tanks, regardless of geometry
- No moving parts within the tank equals no in-tank maintenance
- Local and networked control
- Optional interactive control system to provide automated tank mixing in conjunction with tank instrumentation

FOR INFORMATION: Visit our Website at www.phewater.com, email info@phewater.com, call us at (800) 641-1726, or write us at 15 Oro Beach Dr., Oroville, WA 98844.

