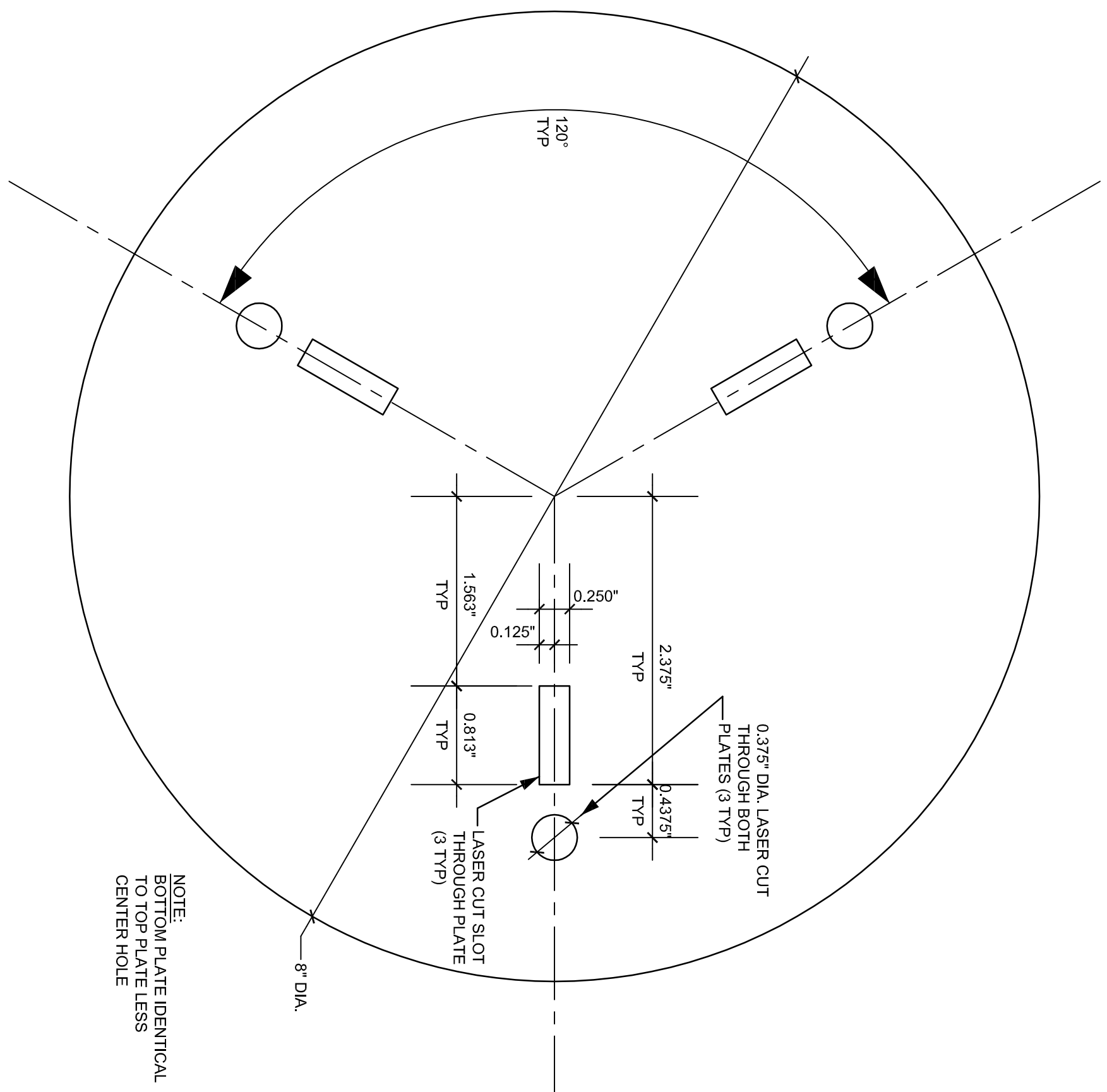


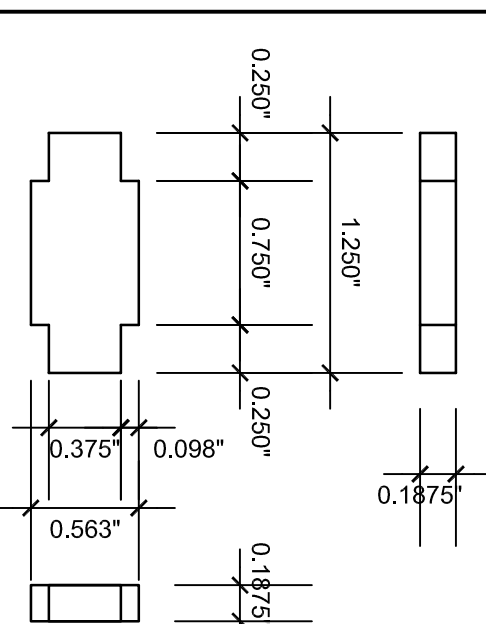
NOTE:
TOP PLATE IDENTICAL
TO BOTTOM PLATE PLUS
CENTER HOLE

1 TOP PLATE
Scale: None

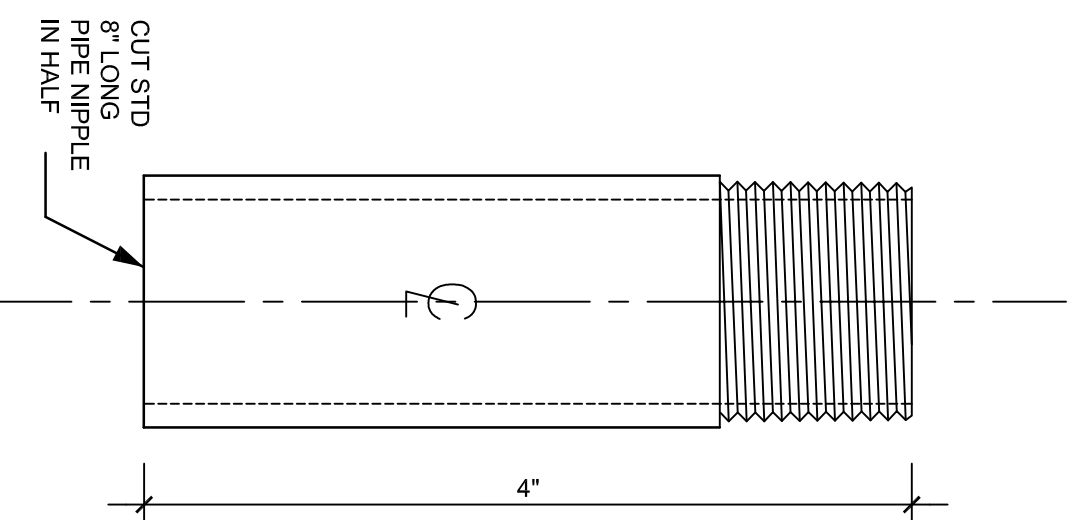


NOTE:
BOTTOM PLATE IDENTICAL
TO TOP PLATE LESS
CENTER HOLE

2 BOTTOM PLATE
Scale: None



3 SPACER
Scale: None



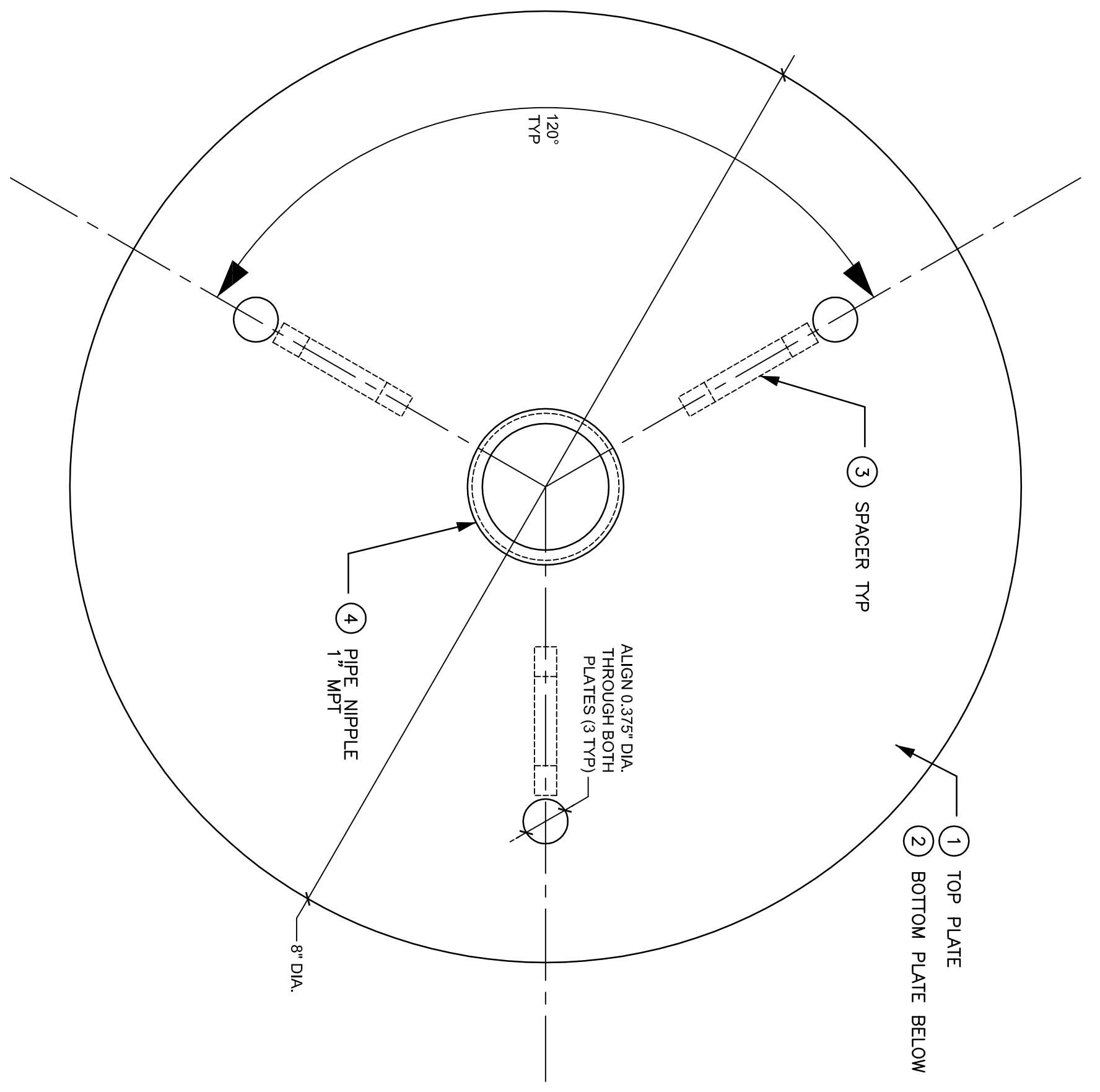
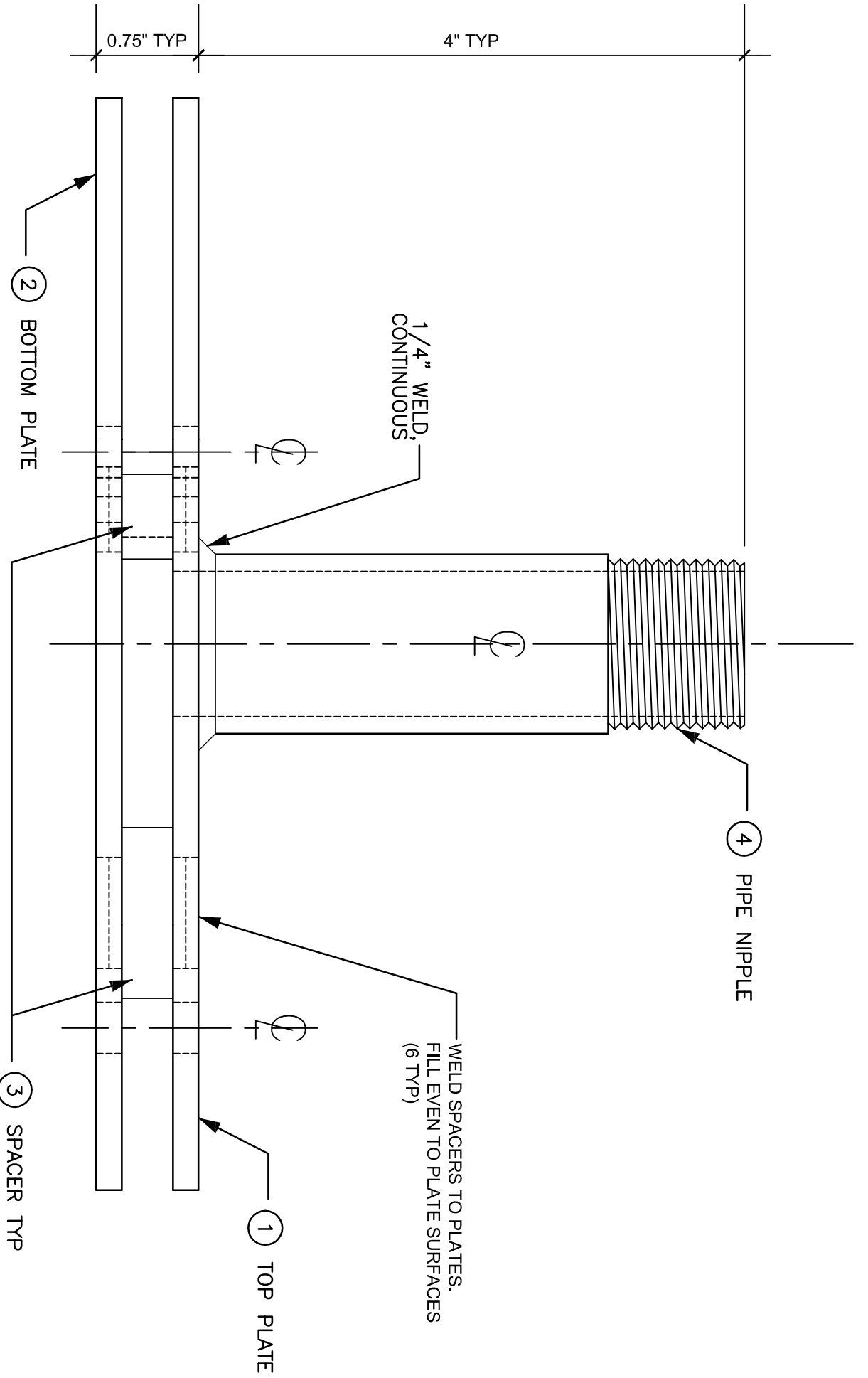
4 PIPE NIPPLE
Scale: None

MATERIALS LIST

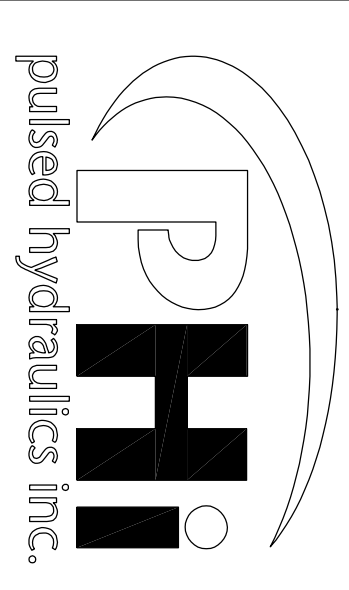
ITEM QTY	DESCRIPTION	MATERIAL	THICKNESS	REVISION DATE
1	TOP PLATE	304 STAINLESS STEEL	3/16"	-
2	BOTTOM PLATE	304 STAINLESS STEEL	3/16"	-
3	SPACER	304 STAINLESS STEEL	3/16"	-
4	1" NPT PIPE NIPPLE	304 STAINLESS STEEL	SCH. 40	-
5	FORMING PLATE ASSY	-	-	-

NOTES

- ALL TOLERANCES SHALL BE +/- 0.020"
- ASSEMBLY:
- INSERT & WELD ALL SPACERS TO THE TOP & BOTTOM PLATES.
- CENTER THE NIPPLE OVER THE CENTER HOLE & WELD TO THE TOP PLATE.
- GRIND ALL SURFACES & EDGES TO REMOVE BURRS.



5 FORMING PLATE ASSEMBLY
Scale: None



Belleve, WA
info@pphwater.com
T: 425.785.3192
F: 425.643.2555

© 2006 Copyright Pulsed Hydraulics, Inc.
All rights reserved.
All drawn and written information appearing herein shall not be duplicated, disclosed or otherwise used or distributed without the prior written consent of Pulsed Hydraulics, Inc.

Shop Drawing For Forming Plate Assembly

8" DOUBLE FORMING PLATE STAINLESS STEEL

MARK	DESCRIPTION	DATE	BY

REVISIONS

Project #: 05-003
Date: 11-17-05

PLAN, DETAILS, NOTES & MATERIALS
DFP-8SS