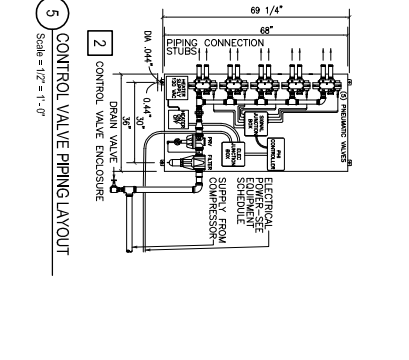
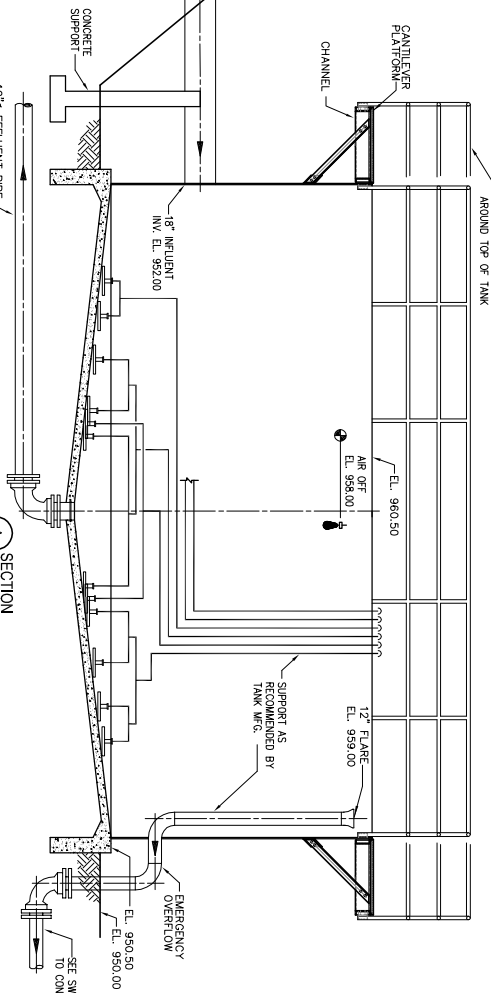
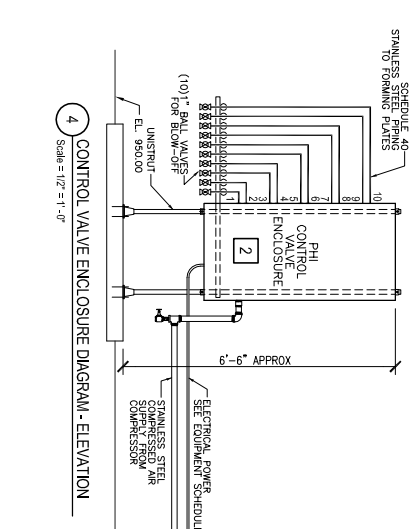


- ### NOTES
- EQUIPMENT SCHEDULE ITEMS 1, 2 & 3 AND AN AIR COMPRESSOR ARE PROVIDED BY PHIL.
 - THE ENTIRE TANK MIXING SYSTEM INCLUDING BUT NOT LIMITED TO, ALL PIPING, THE CONTROL VALVE ENCL'S, FORMING PLATES SUPPORTS, CONCRETE PADS AND ELECTRICAL CONNECTIONS SHALL BE INSTALLED BY THE GENERAL CONTRACTOR.
 - THE PIPING FROM THE CONTROL VALVE ENCLOSURES SHALL BE SCHEDULE 40 304 STAINLESS STEEL.
 - PROVIDE ADEQUATE SUPPORT FOR THE VERTICAL PIPING FROM THE ENCL'S TO THE TANK BOTTOM. DO NOT SUPPORT PIPING WITH BRACKETS THAT COMPROMISE THE INTEGRITY OF THE TANK WALL. PROVIDE ADEQUATE SUPPORT FOR THE HORIZONTAL PIPING BETWEEN THE TANK WALL AND THE FORMING PLATES.
 - CONTROL VALVE ENCLOSURE INTERIOR TEMPERATURE SHALL BE MAINTAINED AT A MINIMUM OF 35°F.
 - SHIM THE FORMING PLATES SO THEY ARE INSTALLED LEVEL.



MAP
 AS SHOWN
 EQUALIZATION BASIN
 W/ BASE BID
 MIXING EQUIPMENT
 PLAN, SECTION, & DETAILS